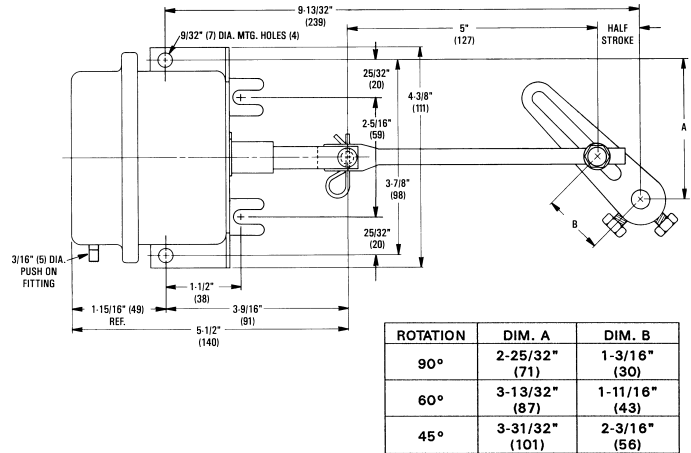


Installation Guide

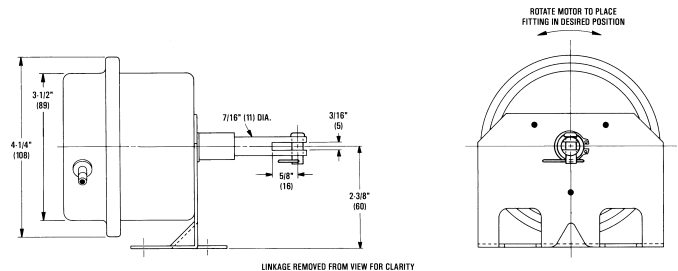
Mounting

1. Check that the balljoint is positioned for the correct rotation. Refer to the graph's "A" and "B" dimensions for other rotations.
2. Connect to the damper shaft.
3. Position the damper for its "normal" position.
4. Mount the actuator to the duct work or damper frame using the mounting holes in the bracket.
5. Rotate actuator body so the air connection is in the desired location.
6. Check that the linkage will not bind as the shaft extends and retracts.



Connections

- ◆ Use 1/4" (6 mm) O.D. polyethylene tubing.
 - ◆ Use only clean, dry control air. No attempt should be made to use any other medium.
1. Pipe the signal (0 to 20 psi) to the input fitting.
 2. Slowly apply supply pressure to fully stroke the actuator and linkage.
 3. Check for any binding.



Adjustments and Calibration

Fine tuning can be accomplished by adjusting the balljoint on the pushrod.

Maintenance

The MCP-8031 actuator is designed for long term reliability. No routine maintenance is required.

KMC Controls
 19476 Industrial Drive
 New Paris, IN 46553
 574.831.5250
www.kmcccontrols.com