

Installation Guide

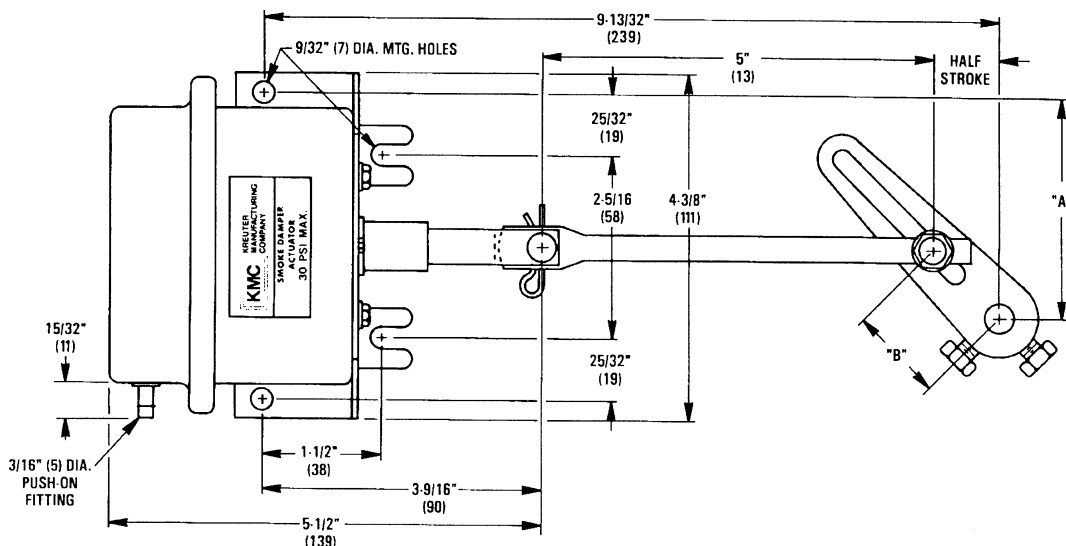
Mounting

The MCP-8035-X100/X101 actuators are intended for external duct mounting with linkage supplied by others. Mount carefully and align the linkage so it will not BIND when the actuator shaft extends and retracts.

The MCP-8035-X111/X112 actuators are also intended for external duct mounting.

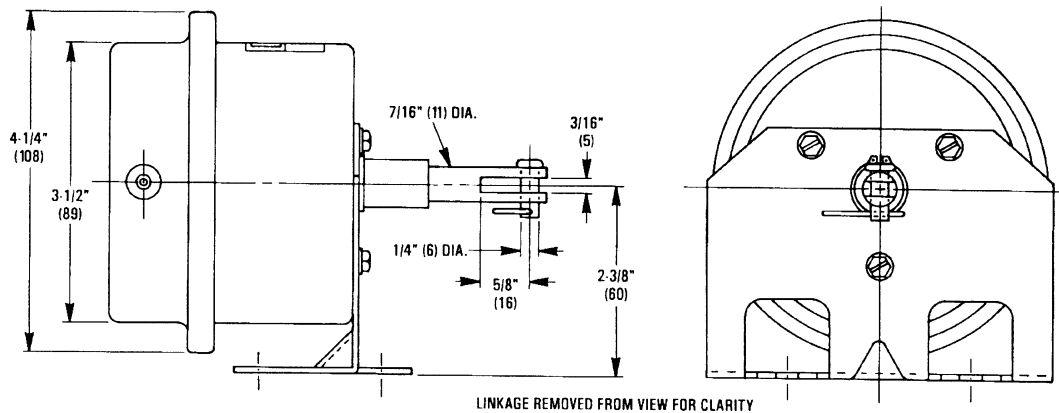
1. Align the bracket's rear mounting holes parallel to the damper shaft's center-line at mid-position.
2. Check that the balljoint is positioned at the factory setting for 90° rotation.
3. Adjust for other rotations (45° or 60°) if needed, by positioning the balljoint as shown by **Dimension B in the table**.
4. Check and adjust the distance from the top rear mounting hole to the damper shaft's centerline. The distance should equal the value shown by **Dimension A in the table**.
5. Rotate the damper shaft to the mid-damper position.
6. Position the crankarm vertically:
 - A. Up for clockwise rotation
 - B. Down for counter clockwise rotation
7. Tighten the crankarm set screws.
8. Mount firmly on the duct.

ROTATION	DIMENSION "A"	DIMENSION "B"
90°	2-25/32" (70)	1-3/16" (30)
60°	3-13/32" (86)	1-11/16" (43)
45°	3-31/32" (100)	2-3/16" (55)



Connections

- ◆ Use 1/4" (6 mm) O.D. polyethylene tubing.
 - ◆ Use only clean, dry control air. No attempt should be made to use any other medium.
1. Pipe the signal (0 to 20 psi) to the input fitting.
 2. Slowly apply supply pressure to fully stroke the actuator and linkage.
 3. Check for any binding.



Adjustments and Calibration

Fine tuning can be accomplished by adjusting the balljoint on the pushrod.

Maintenance

No routine maintenance is required.

If unit is exposed to temperatures over 450°, or any elevated temperatures for over 30 minutes, check for leaks and proper operation. Replace if damaged.

The MCP-8035 series actuators are designed for dependable, long term reliability and performance.

KMC Controls
19476 Industrial Drive
New Paris, IN 46553
574.831.5250
www.kmccontrols.com