

In a world of ones and zeros,
here's one that makes sense of it all



BAC-5050 FullBAC™ Router

A multi-port router designed for
use between BACnet IP LANs,
BACnet Ethernet LANs, and
BACnet MS/TP LANs



BAC-5050 FullBAC Router

Connecting Multiple BACnet Networks

The multi-port KMC FullBAC router efficiently and reliably routes BACnet traffic for today's complex building automation projects that consist of multiple networks.

The BAC-5050 provides communication between foreign devices, BACnet IP LANs, the BACnet MS/TP controller network, and an Ethernet 802.3 (ISO 8802-3) network.

The product derives its "FullBAC" name from the robust connectivity it offers to demanding BACnet jobs:

- Manage up to four MS/TP controller networks through independent EIA-485 ports
- Manage four BACnet IP networks
- Manage an additional Ethernet network
- Configure and debug through EIA-232 ports or TCP/IP
- Dial up with PTP and external modem

The BAC-5050 is capable of IP hopping or tunnel routing (cross communication between IP LANs).

An included power supply and software configuration tool facilitate easy installation and operation and help make your building automation project succeed.

SPECIFICATIONS

Communications

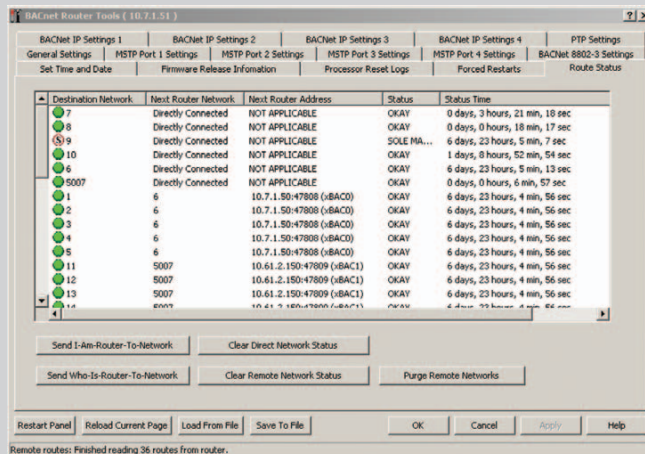
- 10BaseT port for multiple BACnet IP networks and an Ethernet 802.3 (ISO 8802-3) network
- Four EIA-485 ports for MS/TP networks (each supports operating speeds up to 76.8 kilobaud)
- Two EIA-232 ports for configuring, debugging, and PTP (modem) use
- Performs IP assembling/disassembling (PAD) routing for up to 4 BACnet IP PAD networks
- Foreign Device Registration with BACnet Broadcast Management Device (BBMD)
- Point-to-point connection with either direct serial connection or dial-up
- Conforms to ANSI/ASHRAE Standard 135-2001

Memory

- 2 MB nonvolatile flash memory; 2 MB RAM
- Configuration parameters are stored in nonvolatile memory, and RAM automatically backed up to flash memory every 6 hours
- Auto restart on power failure

BACnet Router Tools

- Supplied, intuitive software for configuration of the router over a direct serial connection or TCP/IP
- Self-discovers and displays remote networks



Included software is logically organized for easy router configuration



building your comfort zone®

