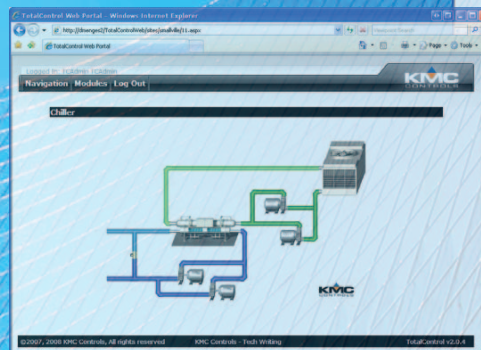


# Bend building automation to your will



## TotalControl™ Building Automation and Master Operator Software

Control multiple protocols and networks from a single interface...anywhere





# Total Control of your building automation...from anywhere

## Manage your building systems...no matter where you are

Never before has the need to control building automation systems been more important. Rising energy costs, security concerns, and the needed productivity of more comfortable work environments are crucial. Remote access and control of these environments have now become more the norm rather than the exception. The capability to link multiple building systems, managing building environments remotely, and managing multi-manufacturer interoperability issues can now be brought under control over the Internet.

TotalControl from KMC Controls, Inc. makes monitoring and managing everything from single rooms to multiple buildings simple. The power of the Internet and TotalControl is all you need to assess

and manage the critical functions of complex building automation systems.

TotalControl is uniquely designed to manage multiple buildings from remote locations. Operators can see and change environmental controls or related building automation systems immediately using a web browser.

Building operations can be scheduled and changed based on changes in occupancy, weather, holidays, and exceptional events. Web pages of building operations can be available for Internet access and change. Alarms can be viewed and acknowledged. Facility functions can be secured for authorized-only users. Building managers can create the reports needed to maximize the energy, access, and security of any building.



# TotalControl

## Control from a web browser

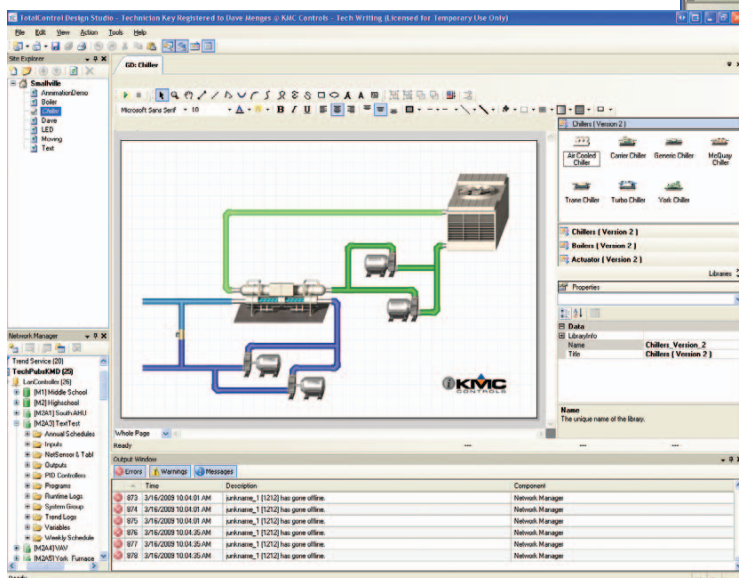
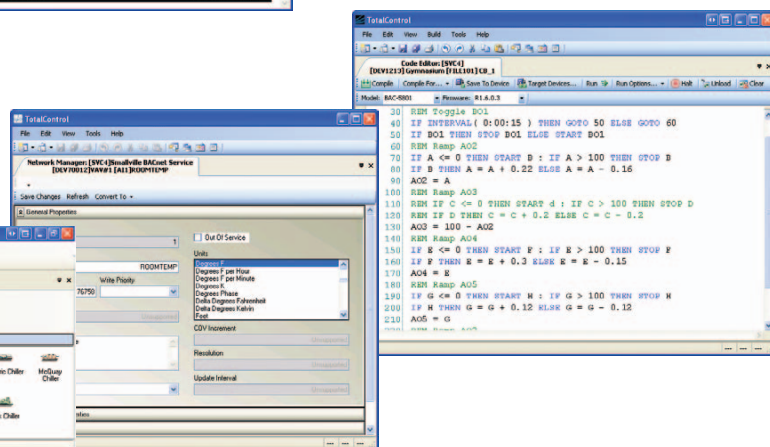
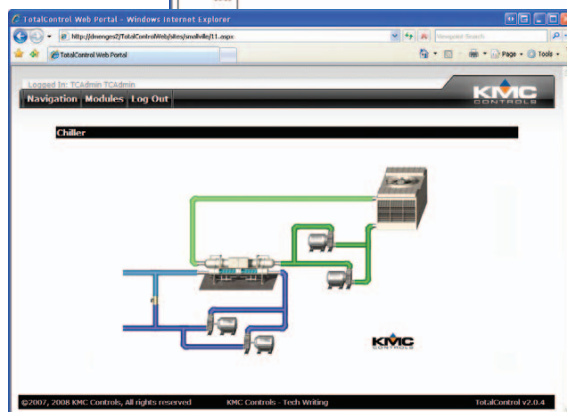
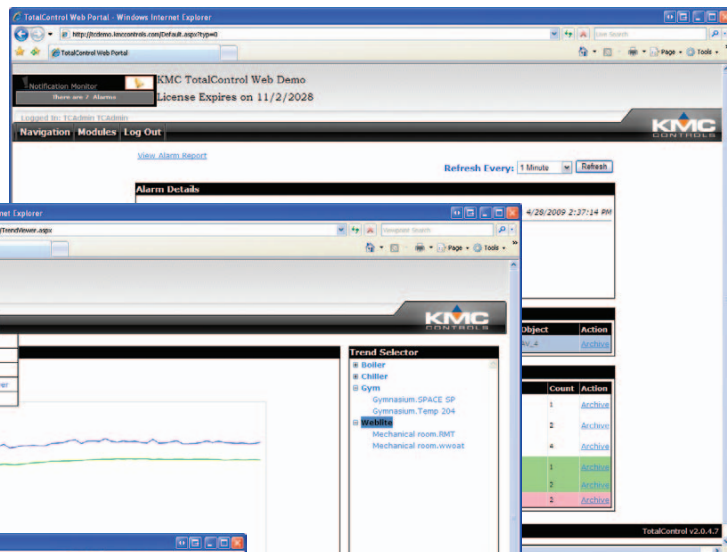
Control it all with an intuitive operator workstation... from your desktop in your office or from your laptop at the beach...

The web interface allows operators to use the Internet to manage building automation systems. Trends, schedules, alarms, and pages are managed from the Building Services computer. Once the system is configured, only a web browser is required for operator interface.

Behind the scenes, the Building Services module collects data from multiple BAS protocols, stores (trends, schedules, and alarm) data in a central database, and serves web pages. This data is stored in a Standard Query Language (SQL) database format.

## Construct the interface

The Design Studio module is used to custom-build the Building Services web interface. The design of the interface is usually done by the controls contractor in consultation with the facility's owner/operator. Once designed, only Building Services is needed to monitor and control the building automation services...from anywhere.



TC Web Portal  
the user's web-based window or  
"operator workstation"

TC Building Services  
behind-the-scenes collection, storage,  
and movement of data

TC Design Studio  
configuration tool for system set-up  
and building the user interface



## TotalControl Compute Requirements

### Windows Vista (Operating System)

Component	Required
Operating system	Windows Vista Business (32-bit) or Windows Vista Ultimate (32-bit)
Processor	Intel® Core™ 2 Duo Processor or equivalent
Processor speed	2 GHz or faster
RAM memory	3 GB

### Windows XP or Windows 2003 Server (Operating System)

Component	Recommended	Minimum
Operating system	Windows Server 2003 SP2 (32-bit) Windows Server 2008 (32-bit) Windows XP Pro SP2 (32-bit)	Windows XP Pro SP2 (32-bit) Limited to five web connections
Processor	Pentium 4 or equivalent	Pentium III
Processor speed	2 GHz or faster	1 GHz
RAM memory	2 GB or greater	1 GB

### Platform

Component	Recommended	Minimum
Hard disk space	160 GB 5 GB free	80 GB 5 GB free
Monitor	SVGA 1280 x 1024	SVGA 1024 x 768
Optical drive	CD/DVD-RW	CD-ROM
Network connection	Ethernet 100BaseT	Ethernet 10BaseT
Web browser	Internet Explorer 7.0 or later	
Internet connection	DSL, cable modem, or direct connection	
Databases Supported	Microsoft SQL Server 2005 Workgroup, Standard, or Enterprise	Microsoft SQL Server 2005 Express for systems with no more than 300 controllers (supplied with TotalControl)
USB	USB port dedicated to hardware key	

(NOTE: For more information, see the data sheet and other documents available on the KMC Controls web site)

**building your comfort zone®**

