

Description

This economical enclosure can contain a variety of different control devices.

Features

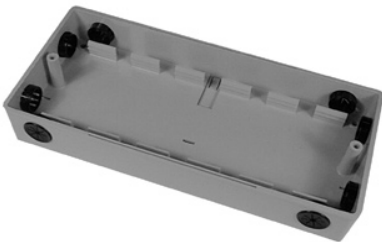
- ◆ Made of ABS, UL Flame Class 94HB
- ◆ 10-1/2" long x 4-3/4" wide x 3-1/8" deep
- ◆ Base incorporates 3-1/4" snap track
- ◆ Cover includes communications port door
- ◆ Screw bosses provided for mounting one 7000 series single-board controller
- ◆ Can hold three XEC-300x transducers (gauges cannot be used with XEC-300x)

Accessories

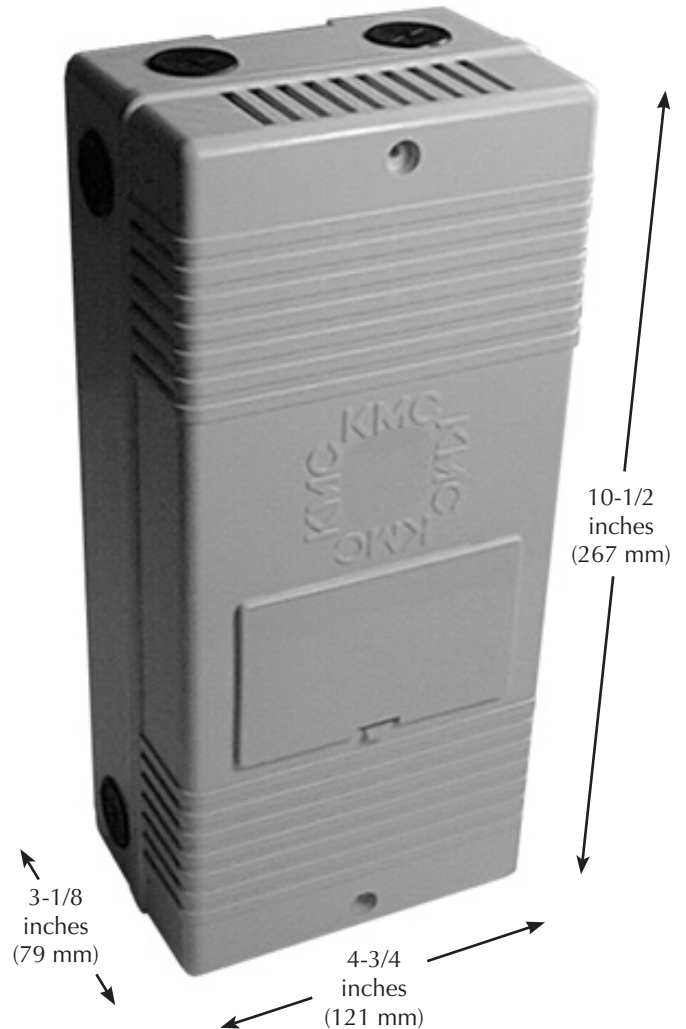
- ◆ HCO-1121: Enclosure cover



- ◆ HCO-1120: Enclosure base



(Note that the HCO-1101 consists of the HCO-1121 and the HCO-1120 assembled together.)



Specifications and design subject to change without notice.

KMC Controls, Inc.

19476 Industrial Drive
New Paris, IN 46553

574.831.5250

www.kmccontrols.com
info@kmccontrols.com