

### Description

The YME-2000 Series Selector Switches are room temperature, fan speed selectors and/or set-point selectors, designed for use with the CEE-2000 Series Fan Coil Unit Controllers.

All YME-2000 Series models contain mechanical interlocks to maintain proper fan speed sequencing. The adjustment knob turns clockwise to increase, and counterclockwise to decrease, the temperature set-point. The indexing switches, shown from left to right, increase fan speed.

### Features

- ◆ Multiple functions available in one unit
- ◆ Mechanical interlocks ensure correct fan speed sequencing
- ◆ Three indexing switches for fan speed control

### Applications

The YME-2000 is an after-market replacement for use with the CEE-2000 Series Fan Coil Unit controllers.

### Models

YME-2002-16	FCU Selector; Fan Speed and Temperature (ivory)
YME-2004-16	Fan Speed and Temperature (lt. oak)
YME-2005-16	YME-2004 w/ Thermistor mounted under knob (lt. oak)
YME-2007-16	YME-2005 w/ Thermometer (lt. oak)
YME-2008-16	Fan speed and Temperature (ivory)
YME-2009-16	YME-2008 w/Thermistor mounted under knob (ivory)



### Accessories

#### For YME-2004-16, 2005-16

HPO-1215	Gold faceplate with visible screw holes.
HPO-1216	Gold faceplate with concealed screw holes.

#### For YME-2007-16

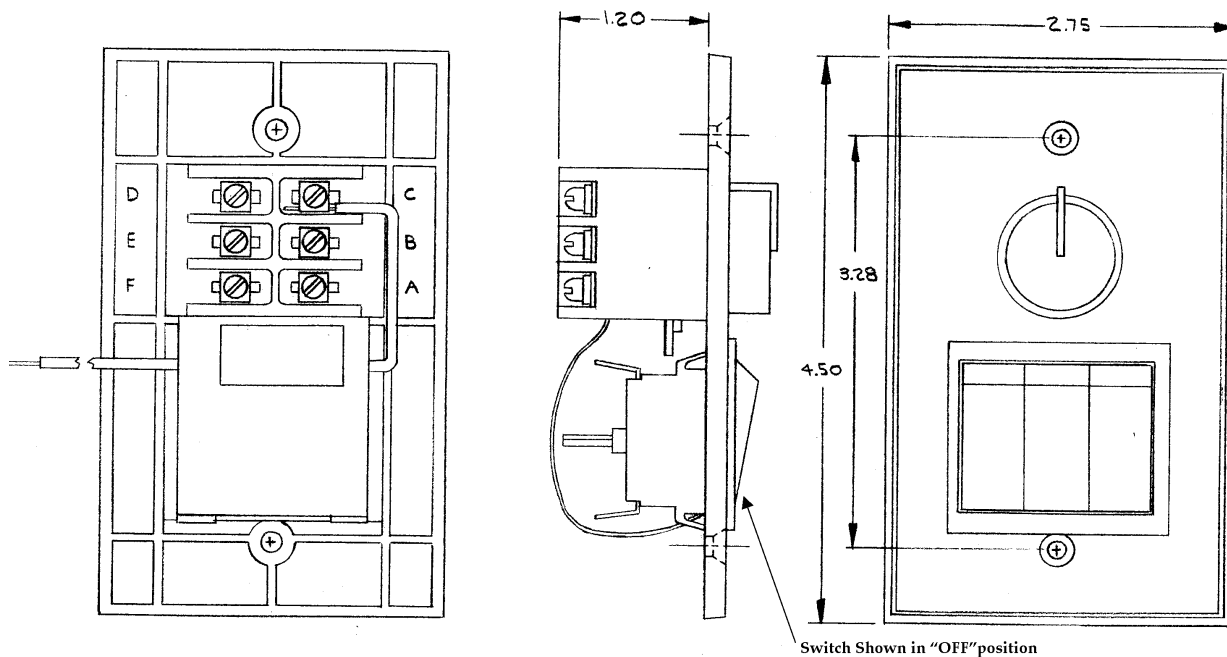
HPO-1219	Gold faceplate with concealed screw holes.
HPO-1220	Gold faceplate with visible screw holes.

#### For YME-2008-16, 2009-16

HPO-1221	Ivory faceplate
HPO-1215	Gold faceplate with visible screw holes.
HPO-1216	Gold faceplate with concealed screw holes.

## Details

All dimension in inches (mm).



## Specifications

**Fan Switch Ratings** 1/2 HP at 120/208/240/277  
VAC 50/60 Hz

**Connections** Screw terminals, plated

**Wire Size** 14 to 18 AWG, copper  
conductors only

**Material** Plastic Valox

**Weight** 3.5 oz. (99 grams)

### Temperature Setpoint Range

YME-2002 55° to 85° F (13° to 29° C)

YME-2004 to 2009 56° to 91° F (13° to 33° C)

### Temperature Limits

Operating 40° to 120° F (4° to 49° C)

Shipping -40° to 140° F (-40° to 60° C)

**KMC Controls, Inc.**  
19476 Industrial Drive  
New Paris, IN 46553  
574.831.5250  
[www.kmcccontrols.com](http://www.kmcccontrols.com)