

Description

The KMD-1171 NetSensor is a wall-mounted, temperature and humidity programmable, operator interface for use in a KMC direct digital controls system. The NetSensor includes nine buttons, seven of which are user programmable, in a simple and functional design. The NetSensor communicates directly with the associated digital controller over the KMC digital network via a local access port.

The simplicity of this design combined with its programmable functions allows for a wide variation of key assignments.

Features

The KMD NetSensors provide the following user features:

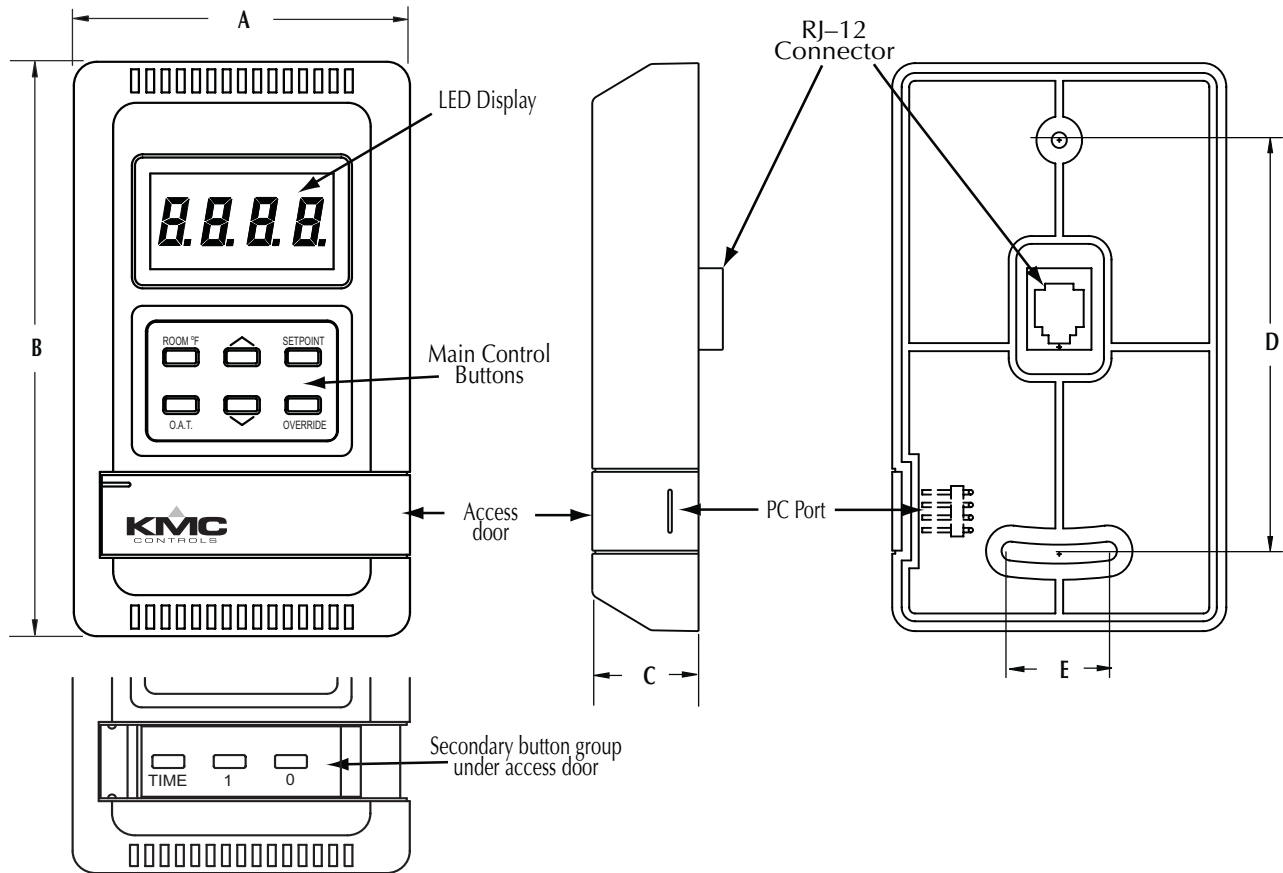
- ◆ Bright, four-character display with programmable on/off times for easy viewing.
- ◆ Seven buttons may be programmed display the state of any point in the attached controller. These buttons are programmed with WinControl software.
- ◆ Auxiliary wire leads provide connection for an additional digital input.
- ◆ PC port provides simple connection to service tool or PC.



Specifications

Display	4-character, 7-segment, red LED, .375 inch high	Weight	2.8 ounces (80 grams)
Connections	6-wire modular RJ-12 to connect to controller Maximum cable length 75 feet Two 6-inch, 18 AWG wire leads for auxiliary input	Material	Light Almond ABS, UL Flame
Power	5 volts DC supplied from connected controller	Temperature Sensor	Type CMOS Accuracy $\pm 0.5^{\circ}$ C at 25° C $\pm 0.9^{\circ}$ C (0 to 40° C) Response Time 20 seconds or less
Mounting	Surface mount or to 2 x 4 inch or 4 x 4 inch handy box. Handy box mounting requires universal backplate.	Humidity Sensor	Type CMOS Humidity 0-100% RH Accuracy $\pm 3.5\%$ RH at 25° C (20-80% RH) Response Time 4 seconds or less

Dimensions



A	B	C	D	E
2.75 in.	4.5 in.	0.87 in.	3.25 in.	0.80 in.
70 mm	114 mm	22 mm	82 mm	20 mm

Environmental limits

Operating Range	47 to 97° F (8.3 to 36.1° C)
Humidity	0–95% RH, non-condensing
Shipping	–40 to 140° F (–40 to 60° C)

Applications

The KMD-1151 NetSensor is designed to be used with KMD-5800 series and KMD-7000 series controllers for room temperature monitoring and control.

Accessories

The following accessories and spares are available:

HMO-5040	Replacement mounting base
HMO-5030	Universal 2 x 4 inch backplate
HMO-5042	Universal 4 x 4 inch backplate
HPO-0044	Replacement Allen screws
HPO-0064	Replacement access door
KMD-5624	PC cable
KMD-5690	25-foot plenum cable with RJ-12
KMD-5691	50-foot plenum cable with RJ-12
KMD-5692	75-foot plenum cable with RJ-12

KMC Controls, Inc.

19476 Industrial Drive
New Paris, IN 46553
574.831.5250

www.kmccontrols.com
info@kmccontrols.com