

### Description

The KMC REE-5024 relay module is designed primarily for use with fan-powered induction units requiring time-proportional control of electric hot water valves on VAV terminal units in HVAC systems. Both fan and valve outputs are controlled by the thermostat's heating setpoint.

Adjustment of the fan starting point allows optimum use of warm air in the return air plenum before opening the hot water valve. The start point may be adjusted from on requirement for heat prior to the valve opening or when the valve begins to open. The fan output circuit is capable of handling contactors of up to 10 VA @ 24 VAC.

The valve output circuit provides a 24 VAC control signal output for **time-proportional** control of Normally Open valves with a PTC (Positive Temperature Coefficient) **thermal element actuator**. The percent on-time of the (discontinued) VEP-11/21/34/37 series valves varies in direct proportion to the thermostat's signal. Therefore, as the thermostat signal increases, the percent on-time of the valve increases. The REE-5024 can control up to three valves. (MEP-3001/3006 replacement thermal actuators for existing valves are still available.)

The REE-5024 is intended for use with the following:

#### Associated Controllers/Actuators:

CSP-5001/5002

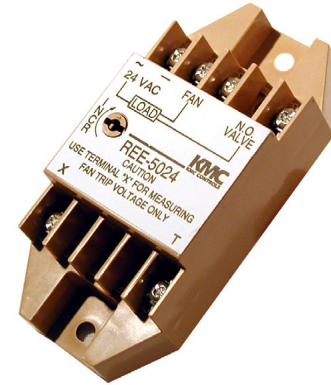
#### Associated Thermostats:

CTE-5104

CTE-5202

NOTE: See the [CSP-5001/5002 Applications Guide](#) and the [CTE-5202 Applications Guide](#) for additional information on applications.

NOTE: For Normally Closed valves, see the [REE-5017 Data Sheet](#).



Still... Made in the U.S.A.

### Features

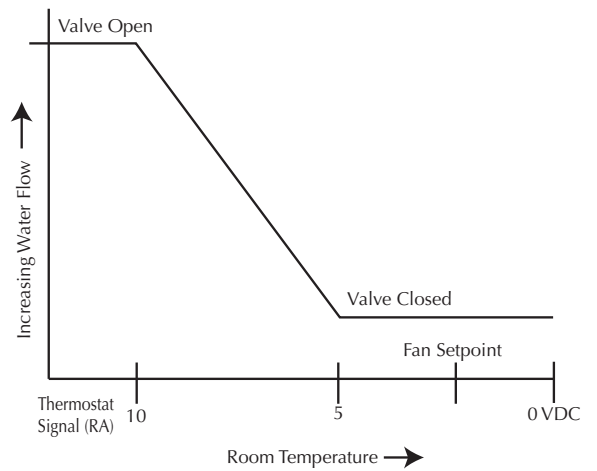
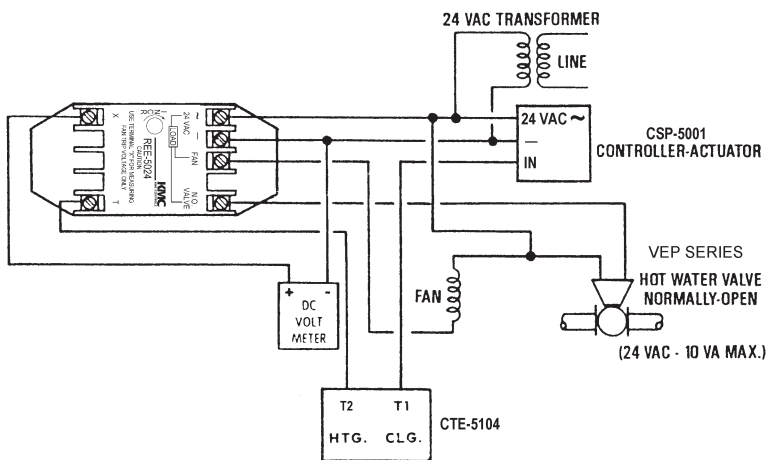
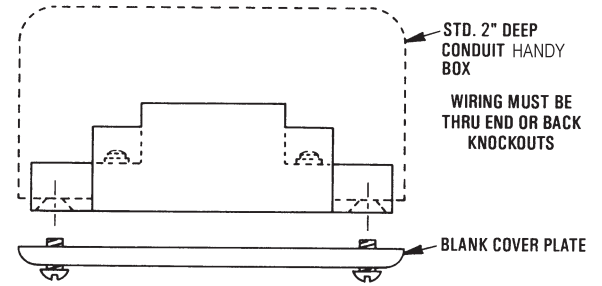
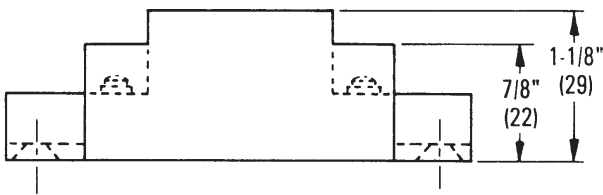
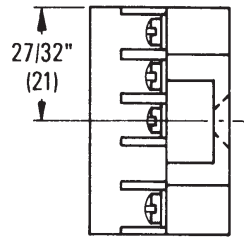
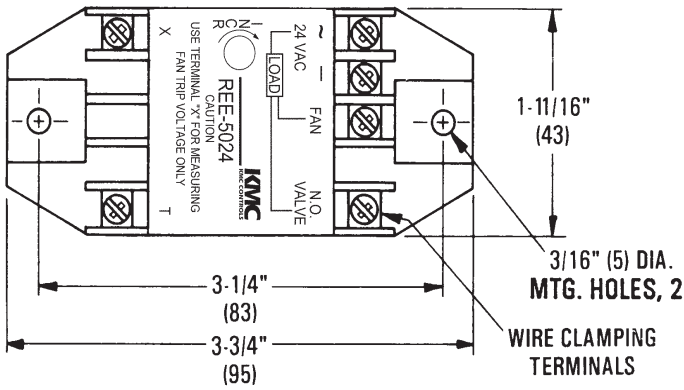
- ◆ Fan output is capable of handling contactors up to 10 VA @ 24 VAC; adjustable to start the unit fan on requirement for heat prior to the valve opening
- ◆ Valve output provides a 24 VAC output for time-proportional control of NO VEP series valves, with percent on-time in direct proportion to the thermostat signal
- ◆ Simple installation

### Specifications

<b>Supply Voltage</b>	24 VAC, +20%/-15% @ 1 VA, plus output loads
<b>Input Signal</b>	0 to 10 VDC
<b>Output Capacity</b>	10 VA max. @ 24 VAC
<b>Fan Setpoint</b>	0 to 5 VDC, adjustable
<b>Associated Valves</b>	
VEP-11/21	2-way
VEP-34/37	3-way
<b>Connections</b>	Plated screw terminals
<b>Wire Size</b>	14 to 22 AWG, stranded
<b>Material</b>	Beige flame-retardant plastic
<b>Weight</b>	2 oz. (57 grams)
<b>Approvals</b>	SASO PCP Registration KSA R-103263
<b>Temperature Limits</b>	
Operating	40 to 120° F (4 to 49° C)
Shipping	-40 to 140° F (-40 to 60° C)

# Details

All dimension are in inches (mm)



## KMC Controls, Inc.

19476 Industrial Drive, New Paris, IN 46553

574.831.5250

www.kmcccontrols.com; info@kmcccontrols.com