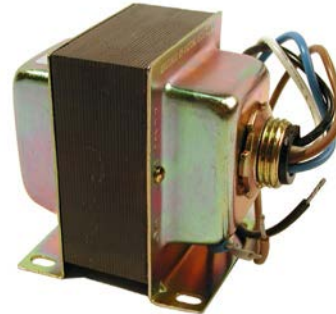


## Description and Application

XEE-6000 series transformers can be mounted using either the mounting base pad or the threaded hub(s).

Models are available to provide power for **UL Listed** or **UL Recognized** applications.

All XEE-6100 series transformers **75 VA and higher** and all XEE-6300 series multi-tap transformers have a manual reset **circuit breaker** on the secondary output.



(Single hub shown—specifications and design subject to change without notice)



## Models and Specifications

Model Selection Guide								
24 VAC Secondaries—all circuits are non-supervised and all secondaries are power limited								
Model #	Primary Voltage	Power Rating	Circuit Breaker	Threaded Hub	UL*	Dimensions (w/o hubs) (inches/millimeters)	Mounting Hole Dimensions	
XEE-6111-040	120 VAC 60 Hz	40 VA	None	Single	R C 2	2.7 W x 2.9 H x 2.2" D (68.6 x 73.7 x 55.9 mm)	2.0 W x 1.8" D (50.8 x 45.7 mm)	
XEE-6112-040				Dual	L C 2			
XEE-6111-050		50 VA		50 VA	Single	R C 2	2.8 W x 2.9 H x 2.2" D (71.1 x 73.7 x 55.9 mm)	2.0 W x 1.8" D (50.8 x 45.7 mm)
XEE-6112-050					Dual	L C 2		
XEE-6211-050	277 VAC 50/60 Hz			50 VA	Single	R C 2	2.8 W x 2.9 H x 2.2" D (71.1 x 73.7 x 55.9 mm)	2.0 W x 1.8" D (50.8 x 45.7 mm)
XEE-6212-050					Dual	L C 2		
XEE-6311-050	120/240/277/480 VAC 50/60 Hz	75 VA		Included	Dual	L C 2	3.5 W x 3.1 H x 2.5" D (88.9 x 78.7 x 63.5 mm)	1.9 W x 2.0" D (48.3 x 50.8 mm)
XEE-6111-075	120 VAC 60 Hz				Single	R C 2	3.9 W x 3.1 H x 2.5" D (99.1 x 78.7 x 63.5 mm)	2.3 W x 2.0" D (58.4 x 50.8 mm)
XEE-6112-075			Dual		L C 2	3.9 W x 3.1 H x 2.5" D (99.1 x 78.7 x 63.5 mm)	2.3 W x 2.0" D (58.4 x 50.8 mm)	
XEE-6311-075	120/208/240/480 VAC 50/60 Hz		Single		R C 2	3.9 W x 3.0 H x 2.5" D (99.1 x 76.2 x 63.5 mm)	2.3 W x 2.0" D (58.4 x 50.8 mm)	
XEE-6111-100	120 VAC 60 Hz		96 VA		Single	R C 2	4.1 W x 3.1 H x 2.5" D (104.1 x 78.7 x 63.5 mm)	2.5 W x 2.0" D (63.5 x 50.8 mm)
XEE-6112-100**					Dual	L C 2 UUKL**		
XEE-6311-100**					120/240/277/480 VAC 50/60 Hz	Dual	L C 2 UUKL**	4.3 W x 3.1 H x 2.5" D (109.2 x 78.7 x 63.5 mm)

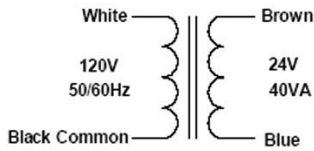
**\*UL Certification** R C 2 = UL Recognized Class 2  
L C 2 = UL Listed Class 2  
UUKL\*\* = Approved for use in smoke control systems

**Wiring** 18 AWG leads, 7.5 to 9.5" (191 to 241 mm) long, stripped and tinned

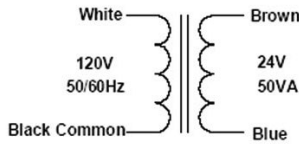
**Weight** 2.4 to 5.3 lbs. (1.09 to 2.4 kg)

**Other Approvals** CE and RoHS compliant

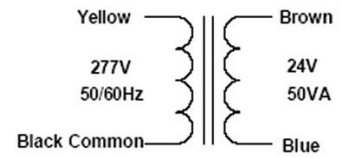
**Configuration** Split bobbin design, steel end bells



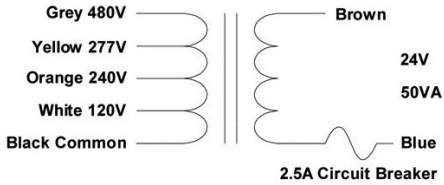
**XEE-6111-040 (Single Hub)  
and  
XEE-6112-040 (Dual Hub)**



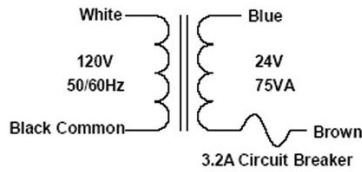
**XEE-6111-050 (Single Hub)  
and  
XEE-6112-050 (Dual Hub)**



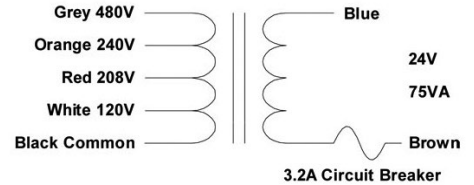
**XEE-6211-050 (Single Hub)  
and  
XEE-6212-050 (Dual Hub)**



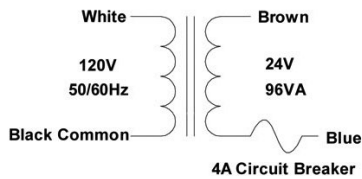
**XEE-6311-050 (Dual Hub)**



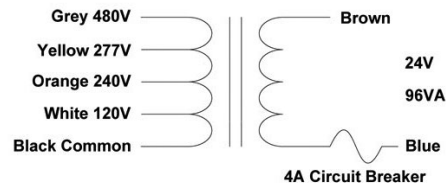
**XEE-6111-075 (Single Hub)  
and  
XEE-6112-075 (Dual Hub)**



**XEE-6311-075 (Single Hub)**



**XEE-6111-100 (Single Hub)  
and  
XEE-6112-100\*\* (Dual Hub)**



**XEE-6311-100\*\* (Dual Hub)**

\*\*NOTE: For information about smoke control applications, see [Smoke Control and Building Automation Systems](#) in the Answers and Education section of the KMC [public web site](#). See also Smoke Control Manuals 000-035-08 (BACnet) and/or 000-035-09 (KMDigital) available on the KMC [partners web site](#) (linked to models XEE-6112-100 and XEE-6311-100).

**KMC Controls, Inc.**  
19476 Industrial Drive  
New Paris, IN 46553  
574.831.5250  
[www.kmcccontrols.com](http://www.kmcccontrols.com)  
[info@kmcccontrols.com](mailto:info@kmcccontrols.com)